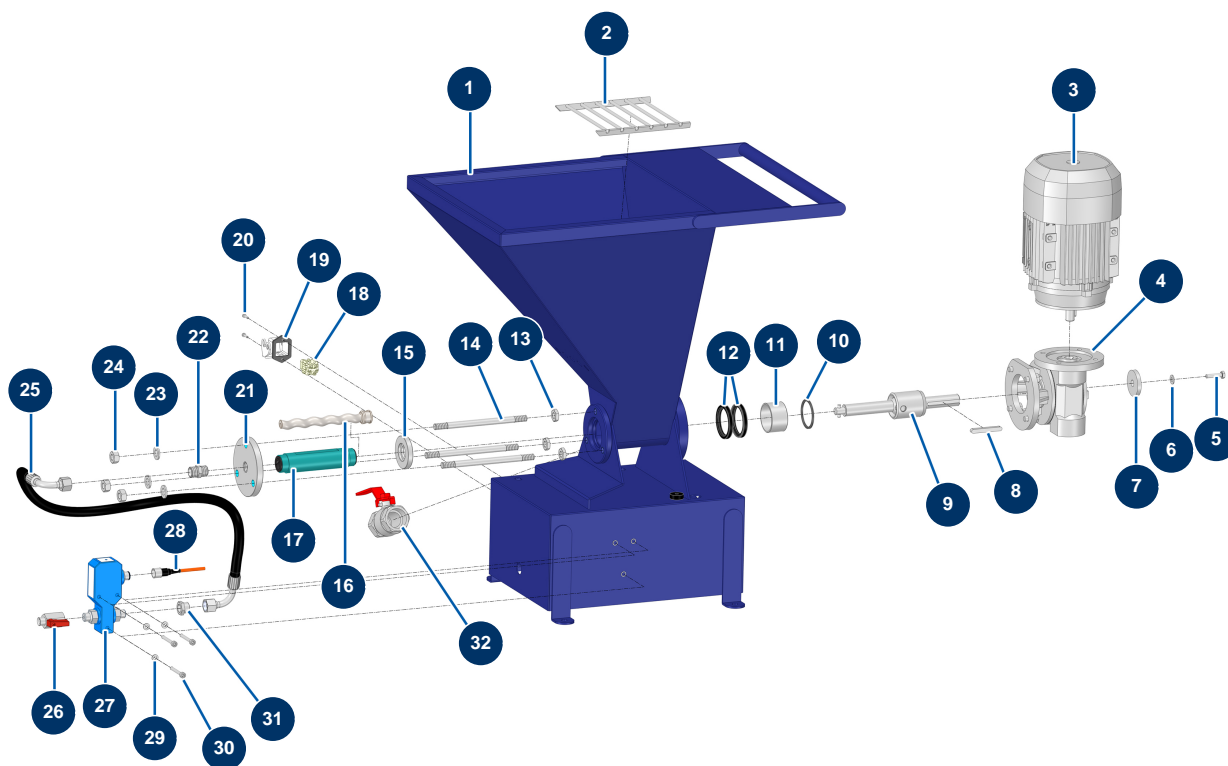


## TWINMIX two-component dosing machine - Hardener machine



### Détails des pièces

Pos.	Référence	Désignation
1	C24039	1
2	C24041	2
3	30008	Electric motor 0,55 kW - T71 - B14 -1400 rpm - 400V
4	30042	Speed reducer 90° - T40 - R30 - B14/T71
5	14218	THEF 6 x 25 inox screw
6	80259	Ø 6 medium washer
7	C22885	7
8	90751	6 x 6 x 50 parallel key with round end for 4P
9	15329	Drive shaft for TWINMIX 4 P
10	30351	EUROPRO 4 P grease cage gasket
11	60011	EUROPRO 4 P grease cage
12	70062	Spi seal 40 x 52 x 7 for 4,6,8P, AG, MPE, 7000z, 9000z
13	13979	M10 flat inox nut

Pos.	Référence	Désignation
14	M10914	
15	M10916	
16	MI7009265200	
17	MI3F00509800	EUROPRO MAP 12 VITON pump stator RAL9005
18	11914	Female insert 4p + G
19	11915	Blowing machine insulating support 3 p + T - 1 lever
20	12249	3 x 12 cylindrical head screw
21	M10917	
22	30367	3/8" MaleC x 3/8" MaleC low-pressure nipple
23	30280	ø 10 inox narrow washer
24	13978	M10 inox nut
25	15383	
26	30135	1/4" mini lux valve
27	15322	
28	12409	M12 straight female connector with 2m cable
29	70085	ø 5 narrow washer
30	11881	Sander head screw M5 x 40
31	90242	3/8" MaleC x 1/4" FemaleD low-pressure reduction
32	70031	Drain valve for EUROPRO 4-6-8-14 P, MPE, AG, 7000z, 9000z