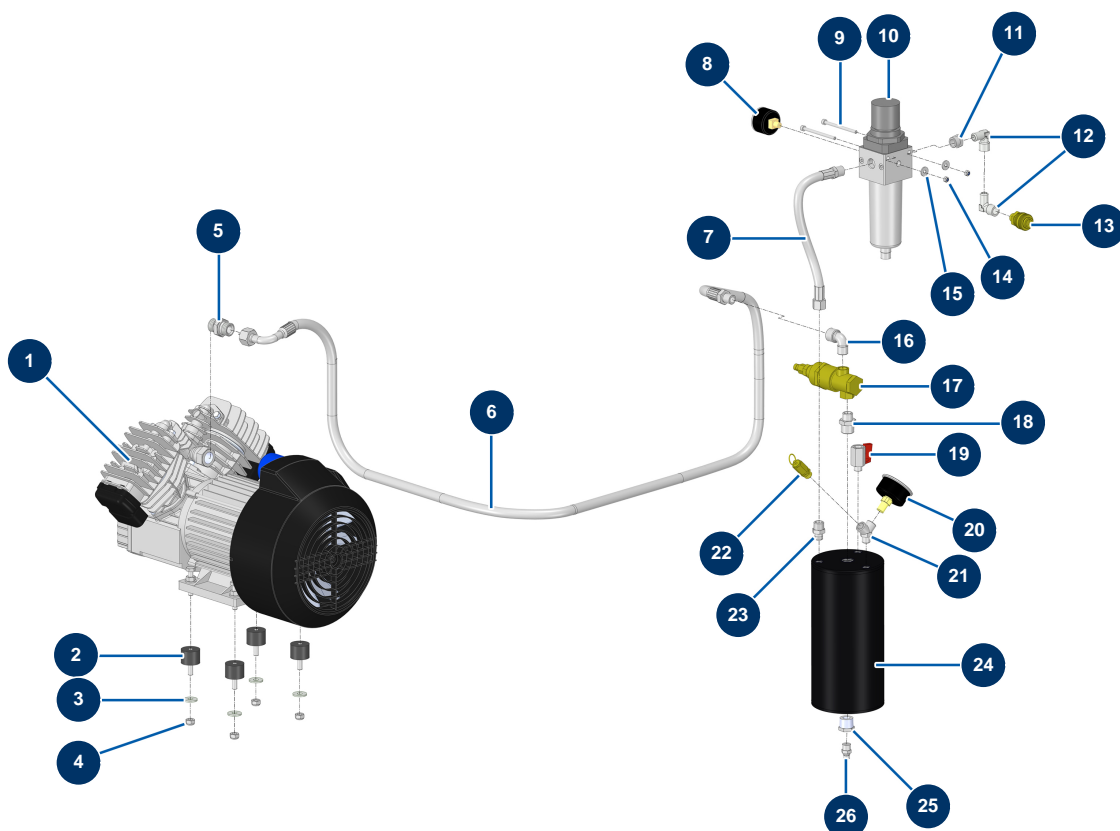


TWINMIX two-component dosing machine - Air circuit



Détails des pièces

Pos.	Référence	Désignation
1	30154	Compression head for EUROPRO 30 and 30+
2	30151	Silentbloc ø 30 x 22 M-F8
3	30292	ø 8 inox large washer
4	90127	M 8 nylstop nut
5	90627	1/2" MaleD x 1/2" MaleD high-pressure nipple
6	10229	ø 12 galvanised braided hose
7	10228	
8	80023	Axial manometer 1/8 conical 40 mm 0 to 10 bar
9	12447	5 x 70 cylindrical head screw
10	90756	Superimposed 3/8" regulator filter
11	90242	3/8" MaleC x 1/4" FemaleD low-pressure reduction
12	30121	90° low-pressure elbow 1/4 MaleC x 1/4 FemaleD
13	70016	1/4" outer threaded female quick fit coupling

Pos.	Référence	Désignation
14	11880	M 5 nylstop nut
15	30290	ø 5 large washer
16	30120	Elbow BP 90° 3/8 MaleC x 3/8 FemaleD
17	101015	3/8" emptying autonomous valve
18	80339	3/8" MaleC x 1/2" MaleC low-pressure nipple
19	30135	1/4" mini lux valve
20	80028	1/4 conical axial manometer - 50mm - 0 to 20 bar
21	30123	Low pressure Y - M1/4" x F1/4" x F1/4"
22	80097	1/4" certified outer threaded safety valve 11 bar
23	91019	1/4" MaleD x 3/8" MaleD low-pressure nipple
24	C21080	24
25	12731	1/4" FemaleD x 1/2" MaleD high-pressure nipple
26	30133	1/4" male compressor tank purge