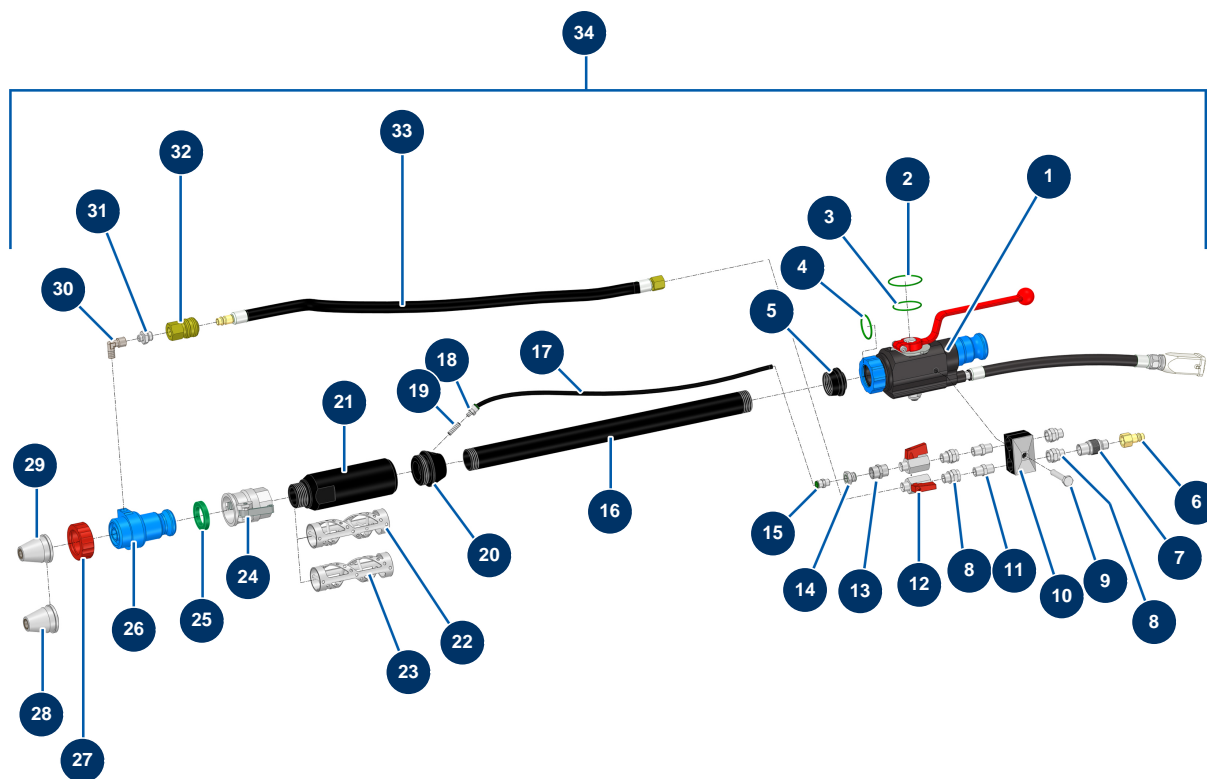


TWINMIX two-component dosing machine - Spraying group



Détails des pièces

Pos.	Référence	Désignation
1	12020	MIXPRO 14 & 28 floor screed ABS spraying lance
2	15475	FKM 80sh O-ring 43 x 2
3	15474	FKM 80sh O-ring 36 x 2
4	15473	FKM 80sh O-ring 30 x 2,5
5	M10932	
6	70046	1/4" inner threaded male quick fit coupling
7	20008	Air adjustment tap 1/4" M x 1/4" F
8	90773	1/4" MaleD x 1/4" FemaleD low-pressure nipple
8	90773	1/4" MaleD x 1/4" FemaleD low-pressure nipple
9	11798	THEF 8 x 45 screw
10	13310	
11	70027	1/4" MaleC x 1/4" MaleC low-pressure nipple
12	30135	1/4" mini lux valve

Pos.	Référence	Désignation
13	80653	1/4" FemaleD x 1/4" FemaleD low-pressure nipple
14	90240	1/4" MaleC x 1/8" FemaleD low-pressure reduction
15	91038	Legris straight coupling M1/8 Ø 6
16	M10934	
17	30403	Calibrated polyurethane tube ø 4 x 6 black by the metre
18	15458	
19	M10935	19
20	M10933	
21	M10909	
22	C24059	
23	C24058	
24	70007	1" camlock alu coupling, inner threaded 1" for 6, 8, 14 & 24P
25	15443	
26	M10483	
27	10031	Aluminium lance ring red
28	10052	Grey nozzle Ø 12mm
29	10050	Grey nozzle Ø 10mm
30	91169	Elbow BP 90° 1/8 MaleC x 1/8 FemaleD
31	11110	1/8" MaleC x 1/4" MaleC low-pressure nipple
32	70017	1/4" inner threaded female quick fit coupling
33	15343	
34	K000037	