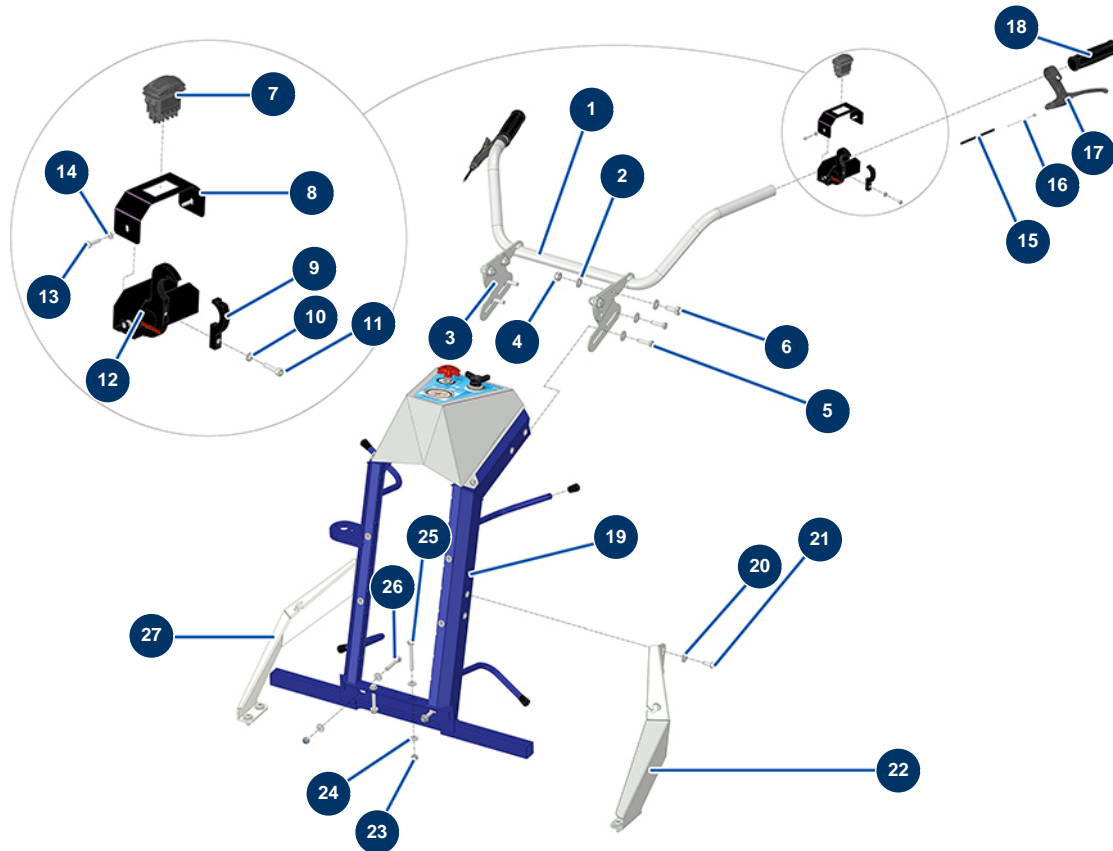


## HYDROLINE L airless self-propelled marking machine - 2 spray-guns - Handlebars



### Détails des pièces

Pos.	Référence	Désignation
1	C23679	
2	80261	ø 10 inox medium washer
3	C23661	3
4	13981	M 10 nylstop inox nut
5	30205	THEF 8 x 30 screw
6	30257	THEF 10 x 25 screw
7	14525	
8	C22550	8
9	C22548	9
10	70085	ø 5 narrow washer
11	12863	5 x 20 inox cylindrical head screw
12	C22546	12
13	11721	4 x 16 inox cylindrical pan head screw

Pos.	Référence	Désignation
14	30267	∅ 4 inox narrow washer
15	51408	
16	51407	
17	51406	
18	90255	Arm handle for EUROPRO 24P, E50 and E100
19	C23676	19
20	30292	∅ 8 inox large washer
21	12111	8 x 20 inox cylindrical pan head screw
22	C23655	
23	90127	M 8 nylstop nut
24	80260	∅ 8 inox medium washer
25	12643	THEF 8 x 65 screw
26	11798	THEF 8 x 45 screw
27	C23656	