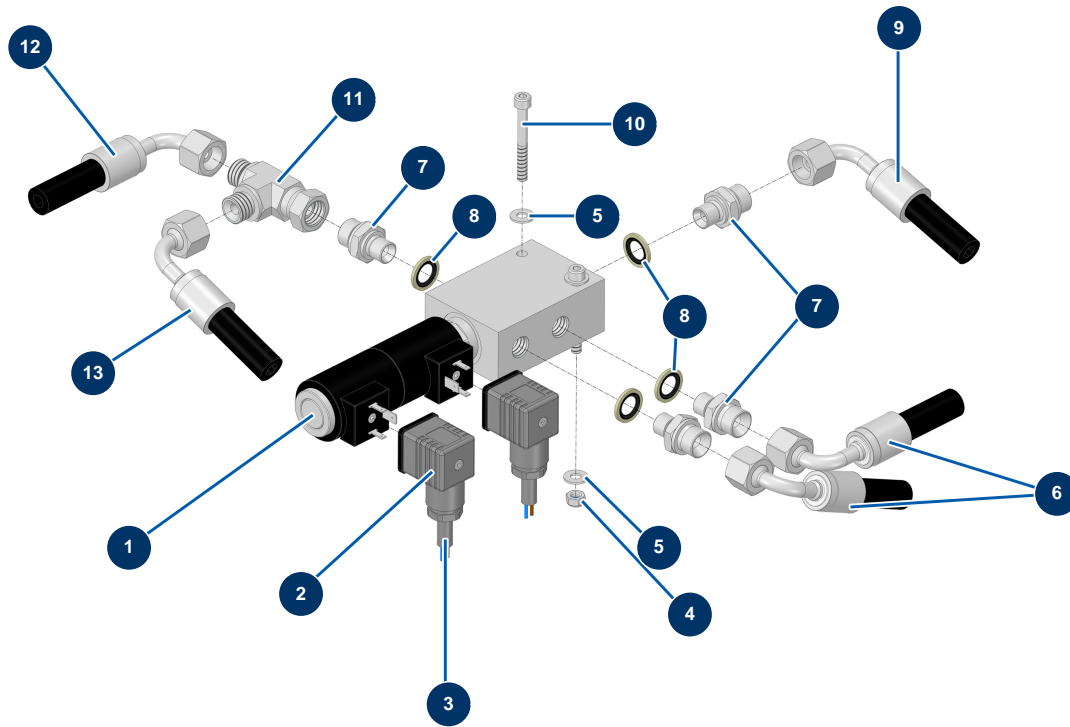


## HYDROLINE L airless self-propelled marking machine - Electrovalve



### Détails des pièces

Pos.	Référence	Désignation
1	14527	
2	14526	
3	60156	H05VVF electrical cable 2x1 by the metre
4	14217	M 6 nylstop inox nut
5	80259	Ø 6 medium washer
5	80259	Ø 6 medium washer
6	51507	
7	90704	1/4" MaleD x 3/8" MaleD high-pressure nipple
7	90704	1/4" MaleD x 3/8" MaleD high-pressure nipple
8	91016	Steel gasket for hollow screw with 1/4 lip
8	91016	Steel gasket for hollow screw with 1/4 lip
9	51505	
10	80618	6 x 50 cylindrical head screw

Pos.	Référence	Désignation
11	20104	3/8" MaleD x 3/8" MaleD x 3/8" revolving Female high-pressure T
12	51506	
13	51504	