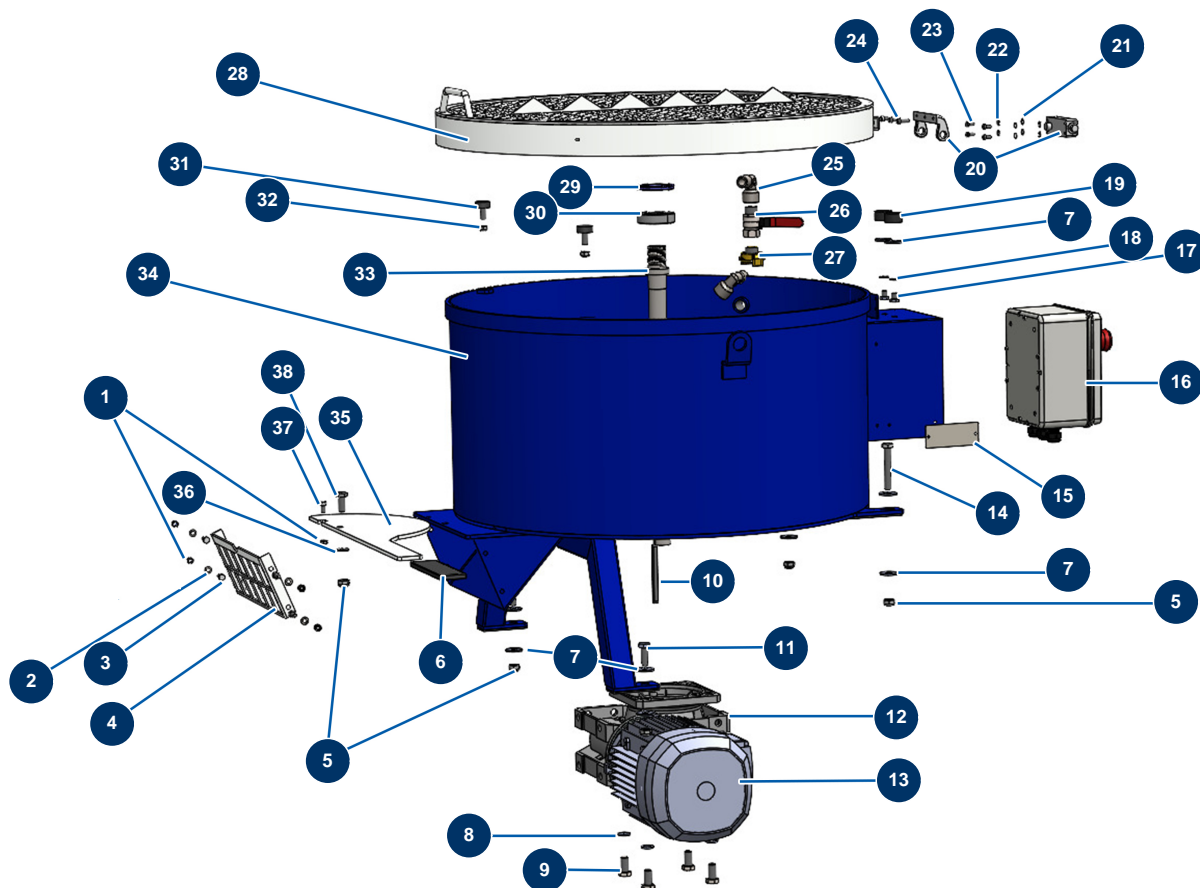


MIXPRO 130 - 400V Tetra sequential mixer on adjustable frame - Tank



Détails des pièces

Pos.	Référence	Désignation
1	20004	M 6 nylstop nut
2	70087	ø 6 inox narrow washer
3	12069	THEF 6 x 16 screw
4	C30028	4
5	60013	M 10 nylstop nut
5	60013	M 10 nylstop nut
6	90255	Arm handle for EUROPRO 24P, E50 and E100
7	30293	ø 10 inox large washer
7	30293	ø 10 inox large washer
7	30293	ø 10 inox large washer
8	12462	Grower washer ø 12
9	12251	THEF 12 x 25 screw
10	90750	8 x 7 x 100 parallel key with round end for 24P et PT

Pos.	Référence	Désignation
11	30258	THEF 10 x 30 screw
12	20745	12
13	90189	Electric motor 2,2 kW - T90 - B14 - 1400 rpm - 400V
14	12163	THEF 10 x 70 inox screw
15	10005	15
16	20732	16
17	30298	THEF 8 x 10 screw
18	30256	ø 8 inox narrow washer
19	20744	19
20	20733	20
21	70085	ø 5 narrow washer
22	12458	Grower washer ø 5
23	20693	23
24	90160	5 x 16 cylindrical head screw
25	90483	Elbow BP 90° 1/2 MaleC x 1/2 FemaleD
26	90023	Red handle valve M1/2" x F1/2"
27	13572	1/2" outer threaded Geka coupling"
28	C30014	28
29	20724	29
30	20723	30
31	90766	Ø 25 x 10 M8 stop
32	90127	M 8 nylstop nut
33	C30027	33
34	C30012	34
35	C30013	35
36	30280	ø 10 inox narrow washer
37	11145	6 x 16 inox cylindrical pan head screw
38	30257	THEF 10 x 25 screw