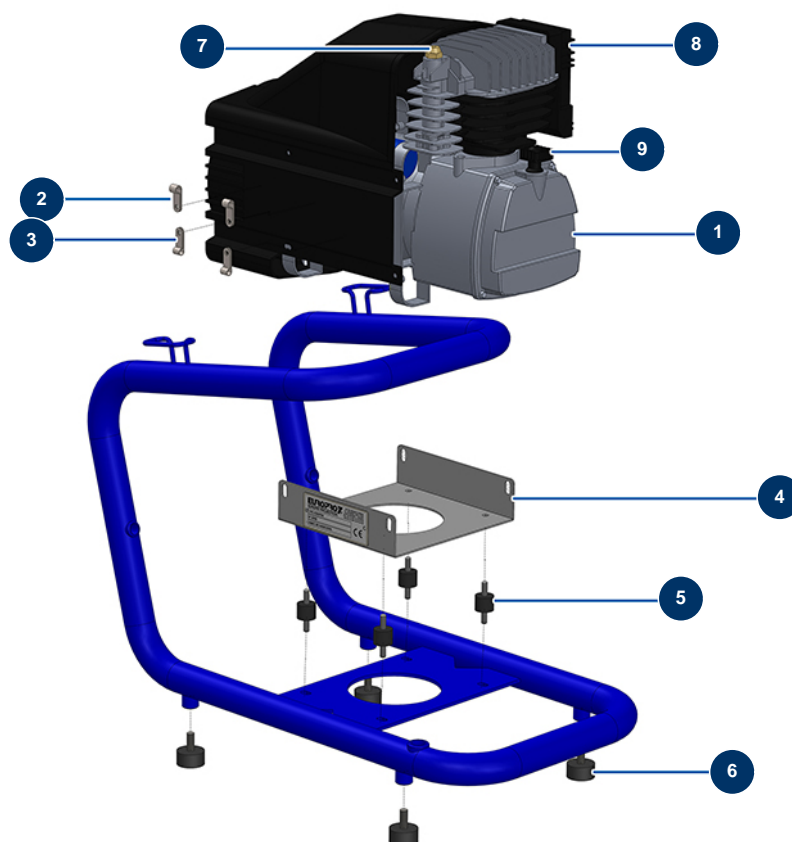


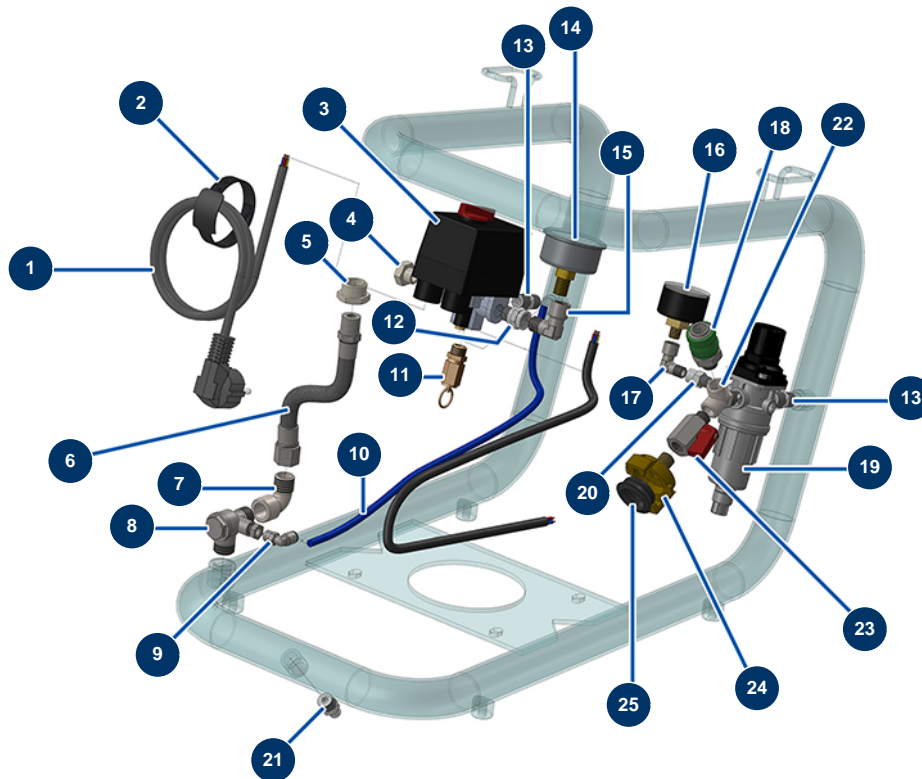
EUROPRO 27 compressor - General view



Détails des pièces

Pos.	Référence	Désignation
1	80454	EUROPRO 27 compression head
2	90266	Cable support Ø 7.9
3	90676	Cable support Ø 6.4
4	30357	EUROPRO 25 fixing plate
5	30147	Silentbloc ø 20 x 15 M6 for Compact-pro 30
6	30142	Ø 30 x 15 M8 stop
7	80099	Discharge valve 1/4 G.M. P=2.2 bars
8	30169	EUROPRO 25 and 27 complete air filter
9	80570	EUROPRO 25 and 27 oil gauge

EUROPRO 27 compressor - Air circuit



Détails des pièces

Pos.	Référence	Désignation
1	90180	Supply cable with moulded plug 3G 1,5 mm ²
2	12410	Self-gripping collar with loop 12,7 x 228 mm
3	30006	Single phase compressor pressure switch
4	30118	1/4" low-pressure male plug
5	90244	1/2" MaleC x 3/8" FemaleD low-pressure reduction
6	30140	E 25 & 27 compressor outlet air hose
7	30120	Elbow BP 90° 3/8 MaleC x 3/8 FemaleD
8	80098	Anti-return valve M3/8 x M3/8
9	30124	Corrugated Legris coupling M1/8" Ø 6
10	30403	Calibrated polyurethane tube ø 4 x 6 black by the metre
11	80097	1/4" certified outer threaded safety valve 11 bar
12	90773	1/4" MaleD x 1/4" FemaleD low-pressure nipple
13	70027	1/4" MaleC x 1/4" MaleC low-pressure nipple

Pos.	Référence	Désignation
13	70027	1/4" MaleC x 1/4" MaleC low-pressure nipple
14	80028	1/4 conical axial manometer - 50mm - 0 to 20 bar
15	30121	90° low-pressure elbow 1/4 MaleC x 1/4 FemaleD
16	80023	Axial manometer 1/8 conical 40 mm 0 to 10 bar
17	91169	Elbow BP 90° 1/8 MaleC x 1/8 FemaleD
18	80080	Female quick fit coupling outer threaded 1/4" Ø 6
19	90014	Superimposed 1/4" regulator filter
20	80642	1/8" MaleD x 1/8" FemaleD low-pressure nipple
21	30133	1/4" male compressor tank purge
22	30123	Low pressure Y - M1/4" x F1/4" x F1/4"
23	30135	1/4" mini lux valve
24	70097	1/4" outer threaded quick fit coupling
25	12118	GEKA coupling gasket