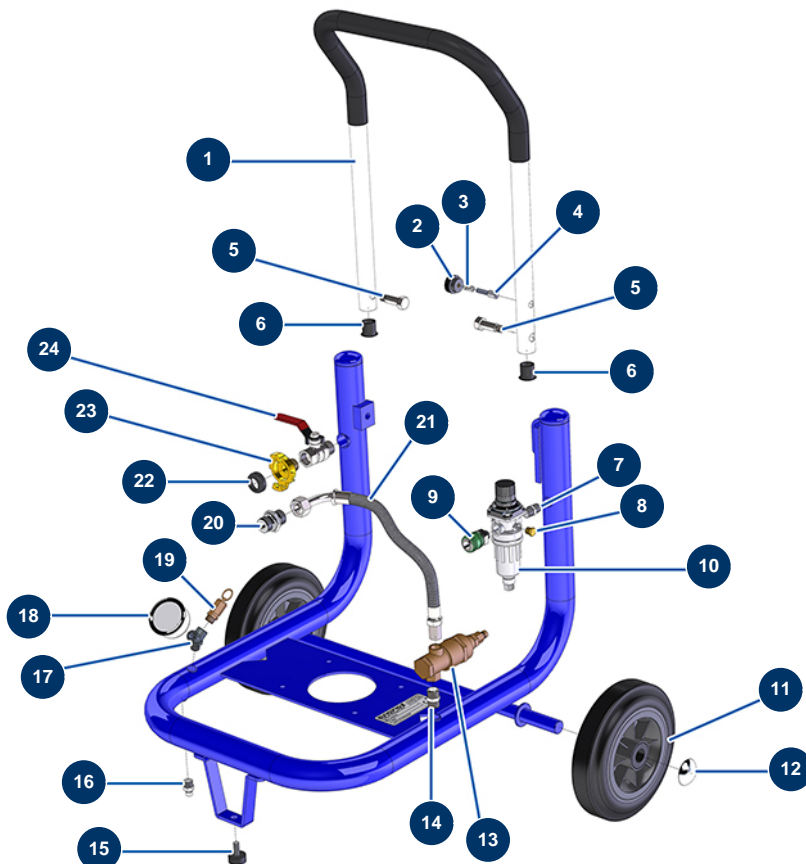


EUROPRO 30+ compressor - Chassis / Pneumatic circuit

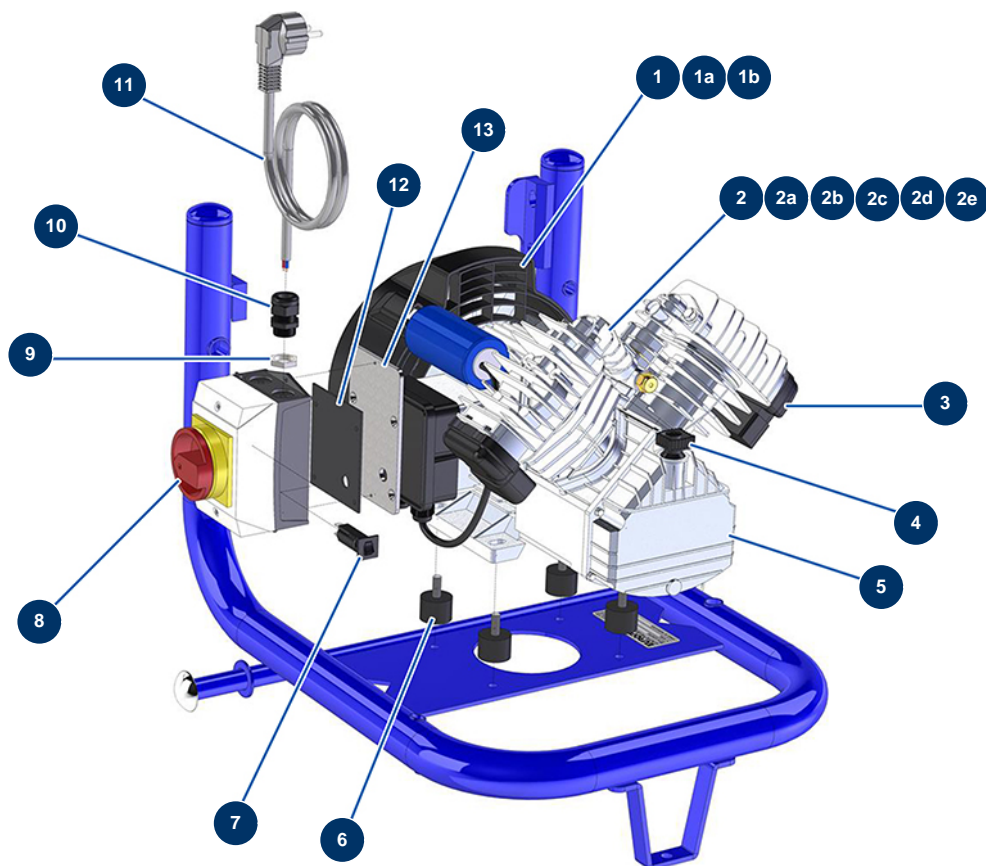


Détails des pièces

Pos.	Référence	Désignation
1	90803	EUROPRO 30 + compressor arm
2	20001	EUROPRO 30+,36 and 40 compressor arm button
3	60040	Compressor trigger spring
4	90179	EUROPRO 30+,36 and 40 compressor arm latch
5	30360	EUROPRO 30+,36 and 40 compressor arm screw
5	30360	EUROPRO 30+,36 and 40 compressor arm screw
6	90870	Black plastic end cap for ø 25 round tube
6	90870	Black plastic end cap for ø 25 round tube
7	70027	1/4" MaleC x 1/4" MaleC low-pressure nipple
8	90237	1/8" low-pressure male plug
9	80080	Female quick fit coupling outer threaded 1/4" Ø 6
10	90014	Superimposed 1/4" regulator filter
11	90720	Complete wheel 200 shaft 20 for 4P and MPE 50

Pos.	Référence	Désignation
12	90281	Ø20 chromed clip
13	101015	3/8" emptying autonomous valve
14	30367	3/8" MaleC x 3/8" MaleC low-pressure nipple
15	30142	Ø 30 x 15 M8 stop
16	30133	1/4" male compressor tank purge
17	30123	Low pressure Y - M1/4" x F1/4" x F1/4"
18	80028	1/4 conical axial manometer - 50mm - 0 to 20 bar
19	80097	1/4" certified outer threaded safety valve 11 bar
20	90627	1/2" MaleD x 1/2" MaleD high-pressure nipple
21	90723	E 30 + compressor outlet air hose
22	70030	Standard quick fit coupling gasket
23	70099	1/2" outer threaded quick fit coupling
24	90023	Red handle valve M1/2" x F1/2"

EUROPRO 30+ compressor - Motor



Détails des pièces

Pos.	Référence	Désignation
1	30185	EUROPRO 30 and 30+ ventilator cover
1a	30187	EUROPRO 30 et 30+ ventilator cover support
1b	30186	EUROPRO 30 et 30+ compressor ventilator fan
2	30154	Compression head for EUROPRO 30 and 30+
2a	30184	EUROPRO 30 and 30+ compressor motor stator
2b	90211	EUROPRO 30 compressor cylinder
2c	90188	EUROPRO 30 series 2 and EUROPRO 30+ compressor bearing
2d	30181	EUROPRO 30 and 30+ compressor complete piston
2e	30179	EUROPRO 30 and 30+ plate valve
3	80051	EUROPRO 30 series 2 and 30+ complete air filter
4	30162	Oil gauge EUROPRO 30,30+ - VKM402 head
5	30183	EUROPRO 30 and 30+ compressor oil crankcase
6	30151	Silentbloc ø 30 x 22 M-F8

Pos.	Référence	Désignation
7	30090	16 A squared petrol motor circuit breaker
8	11602	Compressor switch under box
9	11197	M 20 cable gland nut
10	11622	Black plastic packing M 20
11	90180	Supply cable with moulded plug 3G 1,5 mm ²
12	13682	EUROPRO 30+ compressor box gasket (version 2)
13	C21660	E 30+ new fixing plate moeller box