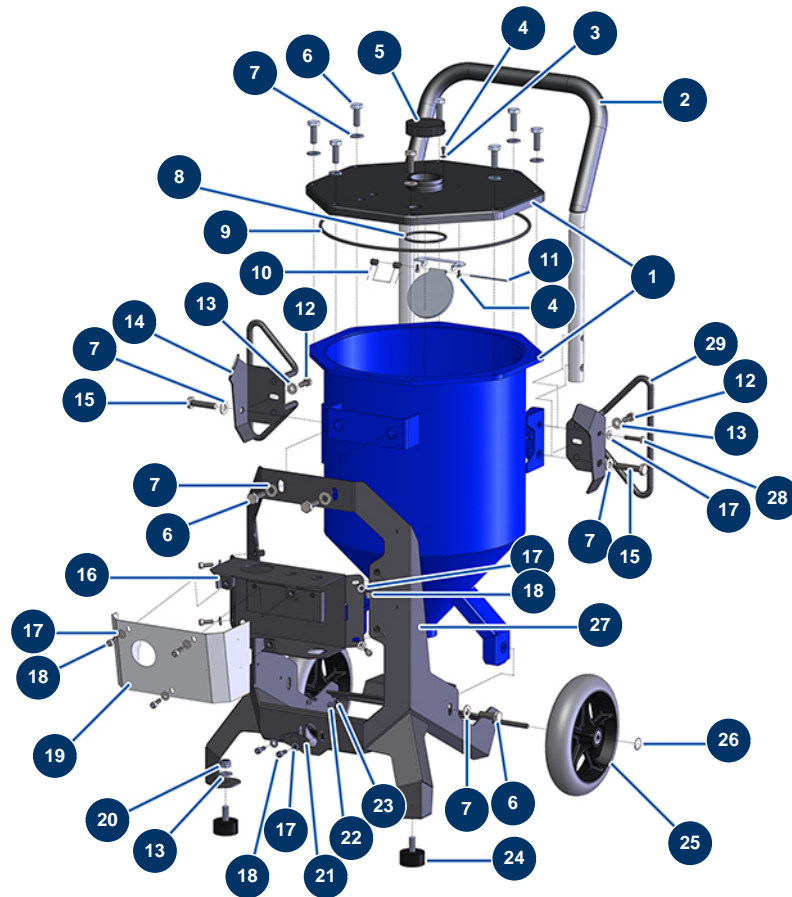


Sandblaster SANDBLASTPRO 30 L - Chassis

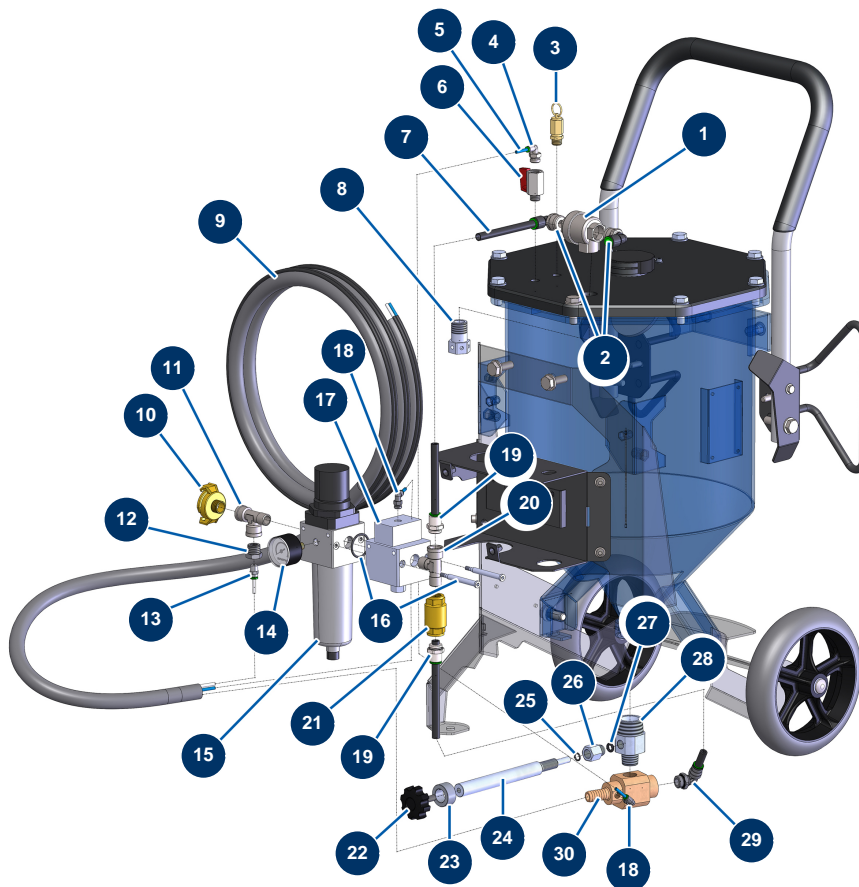


Détails des pièces

Pos.	Référence	Désignation
1	14711	SANDBLASTPRO sandblaster 30 L tank
2	90804	EUROPRO 36 and 40 compressor arm
3	11736	ø 4 inox medium washer
4	310013	M4 x 8 cylindrical head screw cylindrical head screw
4	310013	M4 x 8 cylindrical head screw cylindrical head screw
5	M10765	5
6	30258	THEF 10 x 30 screw
6	30258	THEF 10 x 30 screw
6	30258	THEF 10 x 30 screw
7	80261	ø 10 inox medium washer
7	80261	ø 10 inox medium washer
7	80261	ø 10 inox medium washer
7	80261	ø 10 inox medium washer

Pos.	Référence	Désignation
7	80261	ø 10 inox medium washer
8	14767	63 x 5 O-ring
9	14768	335 x 5 O-ring
10	14757	
11	M10745	11
12	30273	THEF 8 x 20 screw
12	30273	THEF 8 x 20 screw
13	80260	ø 8 inox medium washer
13	80260	ø 8 inox medium washer
13	80260	ø 8 inox medium washer
14	C22997	14
15	12441	THEF 10 x 45 screw
15	12441	THEF 10 x 45 screw
16	C22993	16
17	80259	Ø 6 medium washer
17	80259	Ø 6 medium washer
17	80259	Ø 6 medium washer
17	80259	Ø 6 medium washer
18	90157	M6 x 16 cylindrical head screw - CP 60
18	90157	M6 x 16 cylindrical head screw - CP 60
18	90157	M6 x 16 cylindrical head screw - CP 60
19	C22994	19
20	13981	M 10 nylstop inox nut
21	C23083	21
22	70085	ø 5 narrow washer
23	11880	M 5 nylstop nut
24	30145	Ø 40 x 20 M10 stop
25	13939	Complete 200 wheel - axle of 8
26	90283	Ø8 chromed clip
27	C22990	27
28	Nous consulter	28
29	C22999	29

Sandblaster SANDBLASTPRO 30 L - Pneumatic circuit

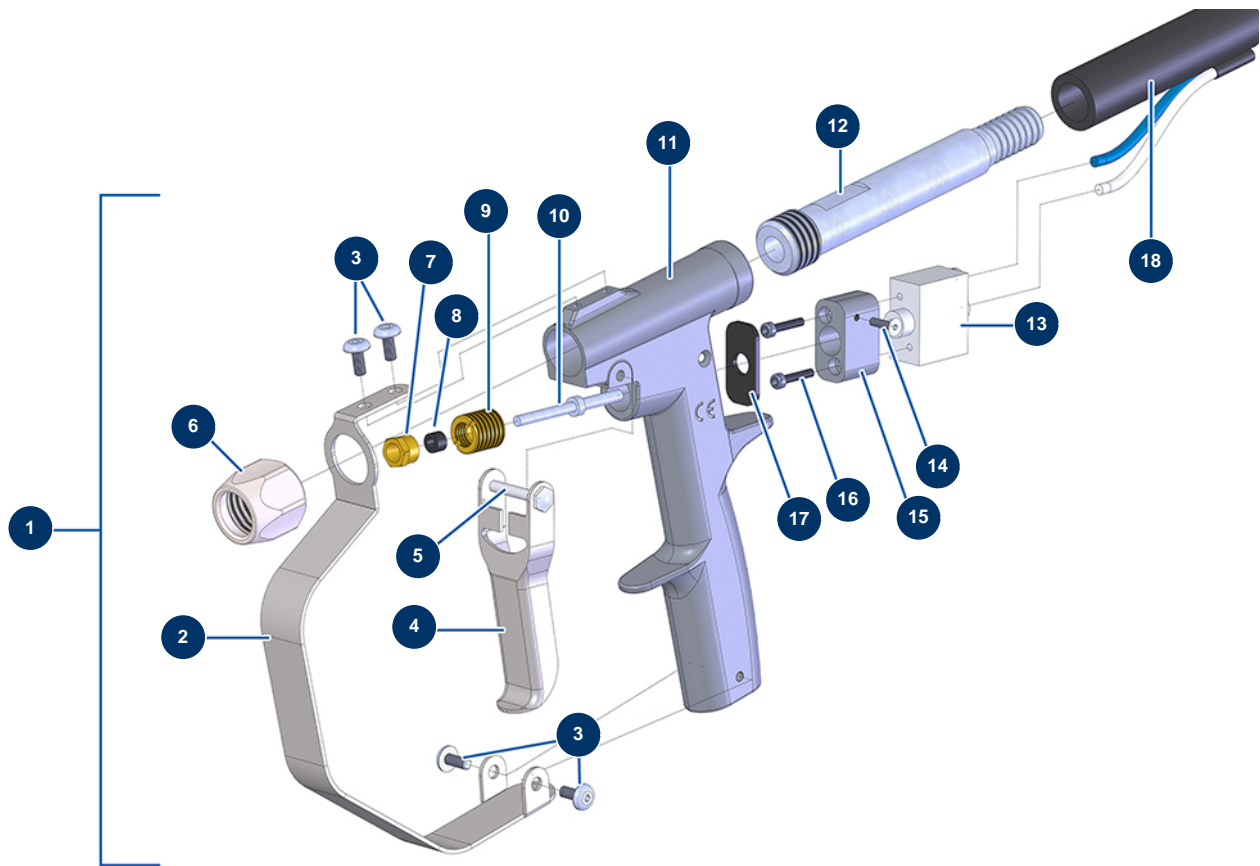


Détails des pièces

Pos.	Référence	Désignation
1	14693	1/2" quick exhaust valve
2	14691	M1/2 ø 10 cylindrical elbow push-in connector
3	80097	1/4" certified outer threaded safety valve 11 bar
4	70407	Sandblaster M1/4" x Ø 4 revolving elbow push-in connector
5	11157	
6	30135	1/4" mini lux valve
7	30405	Calibrated polyurethane tube ø 7,5 x 10 black by the metre
8	M10777	8
9	14828	Complete hose 8 metres for SandblastPro mini sandblaster
10	13571	3/8" outer threaded Geka coupling
11	12530	M3/8" x F3/8" x F3/8" low pressure T
12	90241	3/8" MaleC x 1/8" FemaleD low-pressure reduction
13	11155	M1/8 ø 4 push-in connector

Pos.	Référence	Désignation
14	80023	Axial manometer 1/8 conical 40 mm 0 to 10 bar
15	90756	Superimposed 3/8" regulator filter
16	14688	Mini sandblaster 30 Litres 3/8" air circuit cutting valve assembly kit
17	14686	Mini sandblaster 30 Litres air circuit cutting valve
18	70408	Sandblaster M1/8" x Ø 4 revolving elbow push-in connector
18	70408	Sandblaster M1/8" x Ø 4 revolving elbow push-in connector
19	14779	M3/8 ø 10 push-in connector
19	14779	M3/8 ø 10 push-in connector
20	14783	M3/8" x M3/8" x F3/8" low pressure T
21	14782	
22	11514	Plastic thumb wheel M8 x 20
23	M10750	
24	M10746	
25	1032110	8 x 1,5 VITON O-ring for 400 series spray-gun
26	M10743	
27	15226	
28	M10739	
29	14778	M3/8 ø 10 cylindrical elbow push-in connector
30	M10749	

Sandblaster SANDBLASTPRO 30 L - Spray-gun



Détails des pièces

Pos.	Référence	Désignation
1	14829	SandblastPro sandblaster complete gun without nozzle
2	C23007	2
3	13606	6 x 10 inox cylindrical pan head screw
3	13606	6 x 10 inox cylindrical pan head screw
4	C23078	
5	AC10178	AC spray gun complete trigger axis
6	M10747	6
7	M10741	7
8	14771	Trigger sealing foam for SANDBLASTPRO spray-gun
9	M10740	
10	M10744	
11	14758	
12	M10742	12

Pos.	Référence	Désignation
13	14769	
14	1033003	3 x 8 DIN 7991 countersunk head screw
15	M10751	15
16	12250	3 x 16 cylindrical head screw
17	14770	
18	14828	Complete hose 8 metres for SandblastPro mini sandblaster