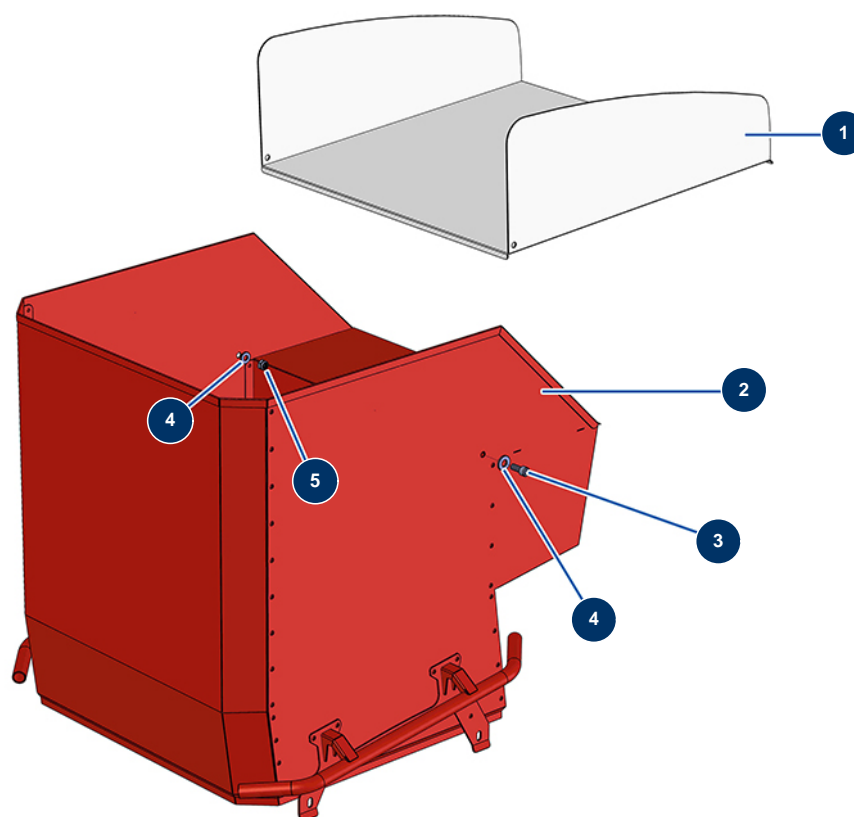


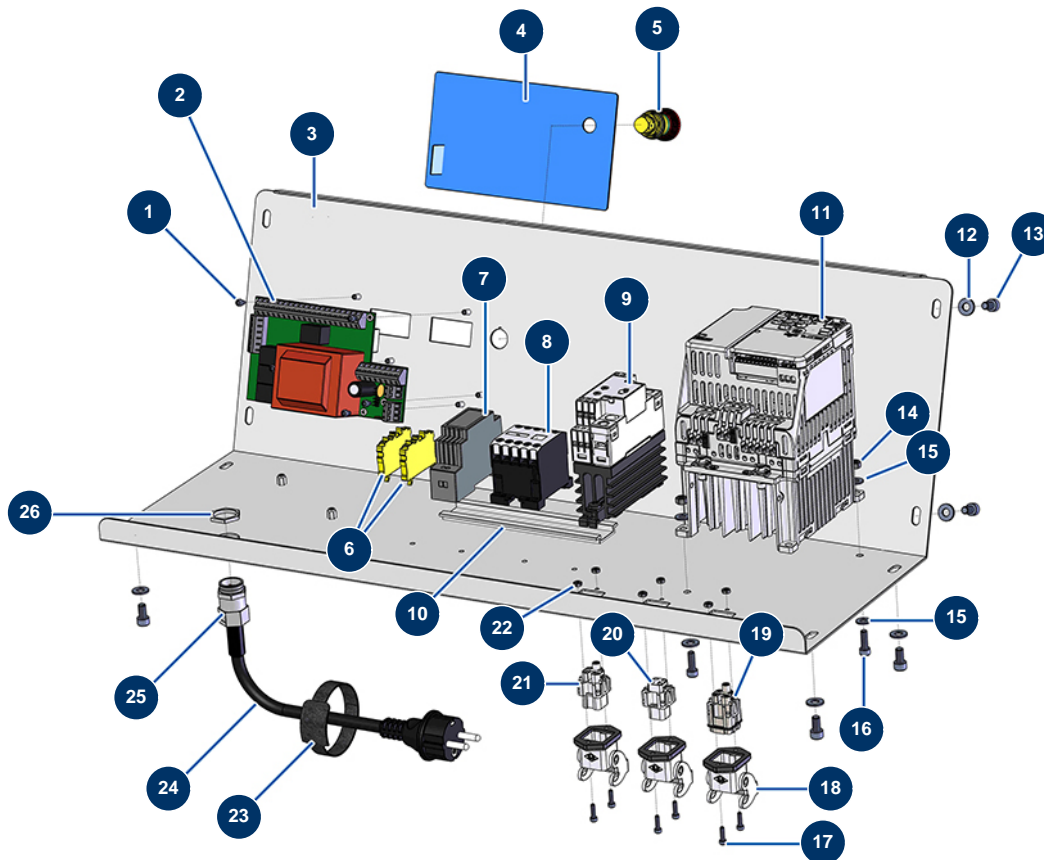
## TURBISOL 200 blowing machine - Tank



### Détails des pièces

Pos.	Référence	Désignation
1	C22953	
2	C22976	TURBISOL 200 blowing machine extension
3	12109	10 x 25 inox cylindrical head screw
4	14102	∅ 12 inox medium washer
4	14102	∅ 12 inox medium washer
5	13981	M 10 nylstop inox nut

## TURBISOL 200 blowing machine - Electrical box (from 10/2021)

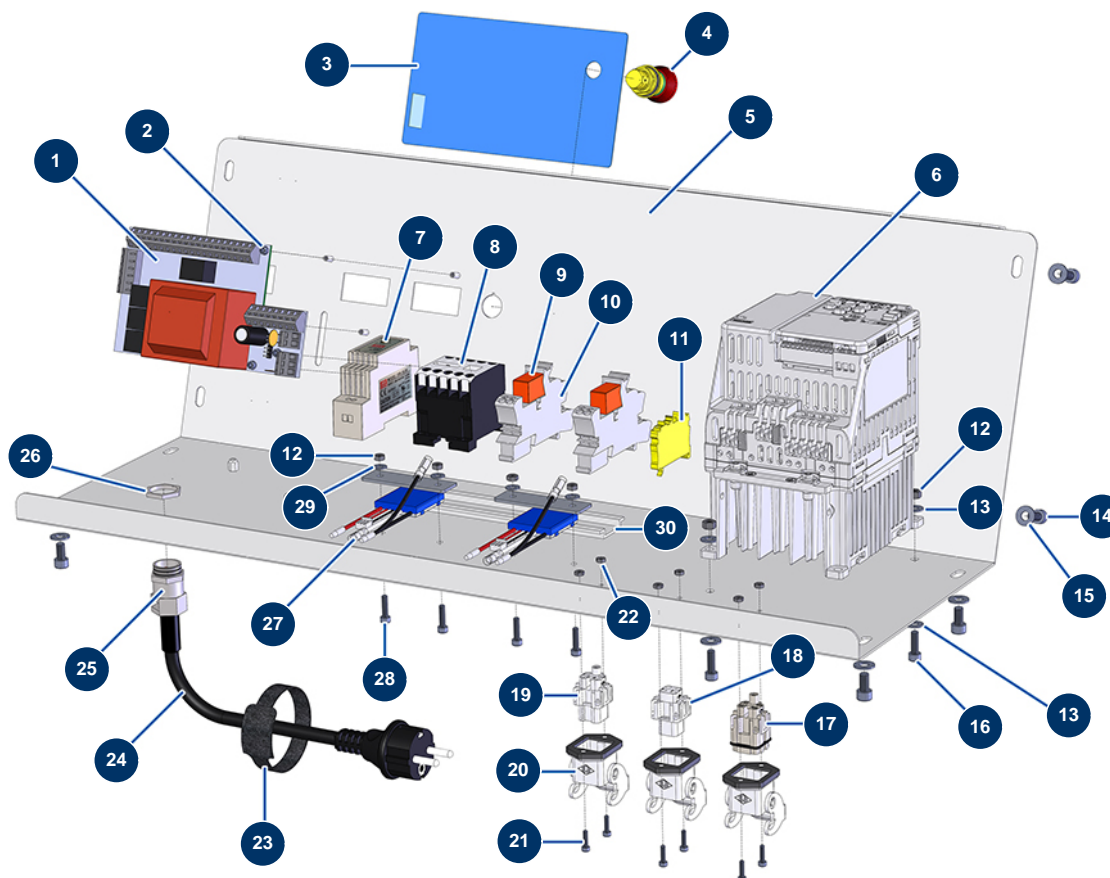


### Détails des pièces

Pos.	Référence	Désignation
1	13329	3 x 6 cylindrical head screw
2	30677	TURBISOL 112 & TRAMONTANE 2 blowing machine electronic card
3	C22962	
4	13013	TURBISOL front with membrane
5	13015	Hanging EMERGENCY STOP button Ø16
6	30038	Yellow and green conductive block 6 mm <sup>2</sup>
7	12711	Supply 230V-24VDC-15W
8	11918	Coil contactor 24 Volt AC
9	14867	30A/230V dimmer for TURBISOL 164/200
10	10265	
11	80458	Inverter 230 V - 1,5 kW
12	80259	Ø 6 medium washer
13	12112	6 x 12 cylindrical head screw

Pos.	Référence	Désignation
14	10038	M 6 nut
15	11737	∅ 5 inox medium washer
15	11737	∅ 5 inox medium washer
16	90160	5 x 16 cylindrical head screw
17	12249	3 x 12 cylindrical head screw
18	11915	Blowing machine insulating support 3 p + T - 1 lever
19	11913	Blowing machine male insert 4 p + T
20	11912	Blowing machine female insert 3 p + T
21	11914	Female insert 4p + G
22	310016	M 3 nut
23	12410	Self-gripping collar with loop 12,7 x 228 mm
24	90214	Power cable with molded plug 3G 2,5 mm <sup>2</sup>
25	80451	Brass cable gland of 13 for power cable
26	30060	11mm cable gland nut

## TURBISOL 200 blowing machine - Electrical box (up to 09/2021)

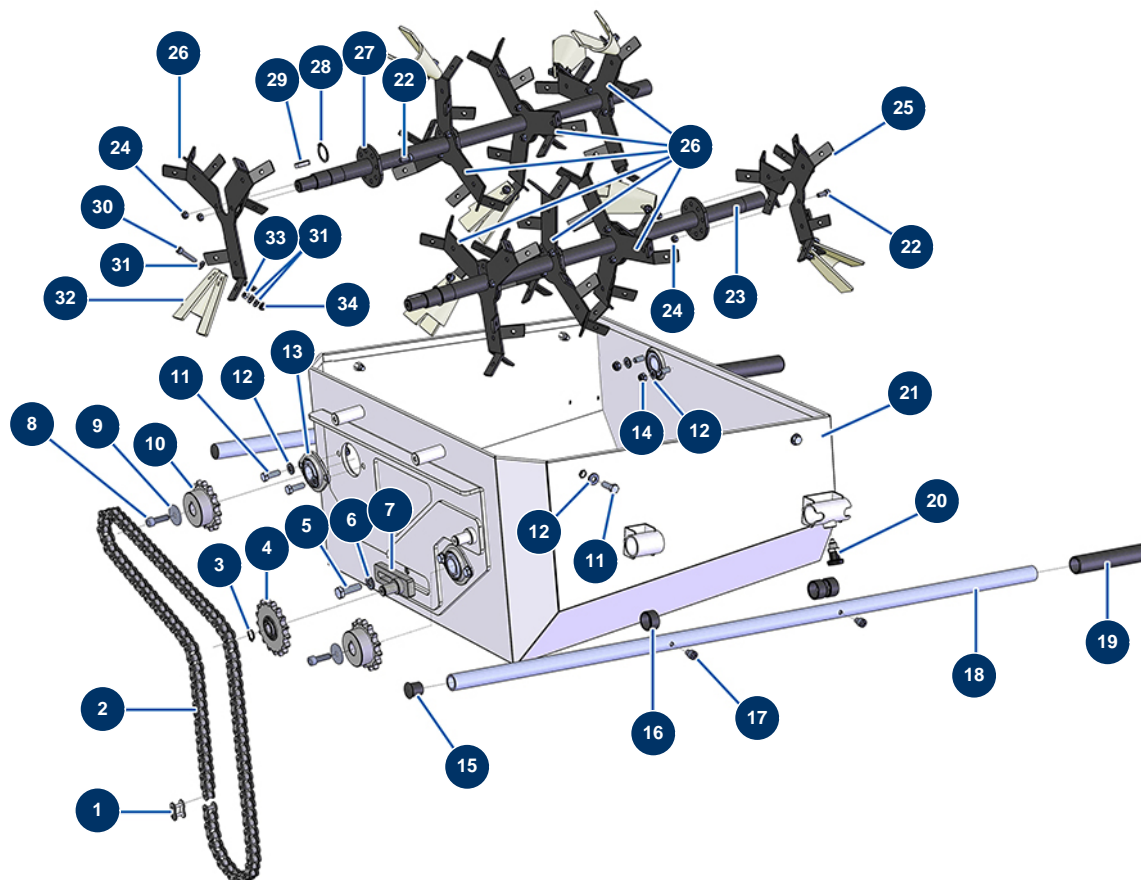


### Détails des pièces

Pos.	Référence	Désignation
1	13004	POLYDRIVE electronic card - 260C version
2	13329	3 x 6 cylindrical head screw
3	13013	TURBISOL front with membrane
4	13015	Hanging EMERGENCY STOP button Ø16
5	C22962	
6	80458	Inverter 230 V - 1,5 kW
7	12711	Supply 230V-24VDC-15W
8	11918	Coil contactor 24 Volt AC
9	12752	Plug-in miniature relay 24V AC - 1RT
10	12751	Plug-in miniature relay base
11	30038	Yellow and green conductive block 6 mm <sup>2</sup>
12	10038	M 6 nut
12	10038	M 6 nut

Pos.	Référence	Désignation
13	11737	∅ 5 inox medium washer
13	11737	∅ 5 inox medium washer
14	12112	6 x 12 cylindrical head screw
15	80259	∅ 6 medium washer
16	90160	5 x 16 cylindrical head screw
17	11913	Blowing machine male insert 4 p + T
18	11912	Blowing machine female insert 3 p + T
19	11914	Female insert 4p + G
20	11915	Blowing machine insulating support 3 p + T - 1 lever
21	12249	3 x 12 cylindrical head screw
22	310016	M 3 nut
23	12410	Self-gripping collar with loop 12,7 x 228 mm
24	90214	Power cable with molded plug 3G 2,5 mm <sup>2</sup>
25	80451	Brass cable gland of 13 for power cable
26	30060	11mm cable gland nut
27	BE15644	MAXPRO 1600 mixer 230V electronic card
28	90137	4 x 16 cylindrical head screw
29	11736	∅ 4 inox medium washer
30	10265	

## TURBISOL 200 blowing machine - Hopper (from 10/2021)

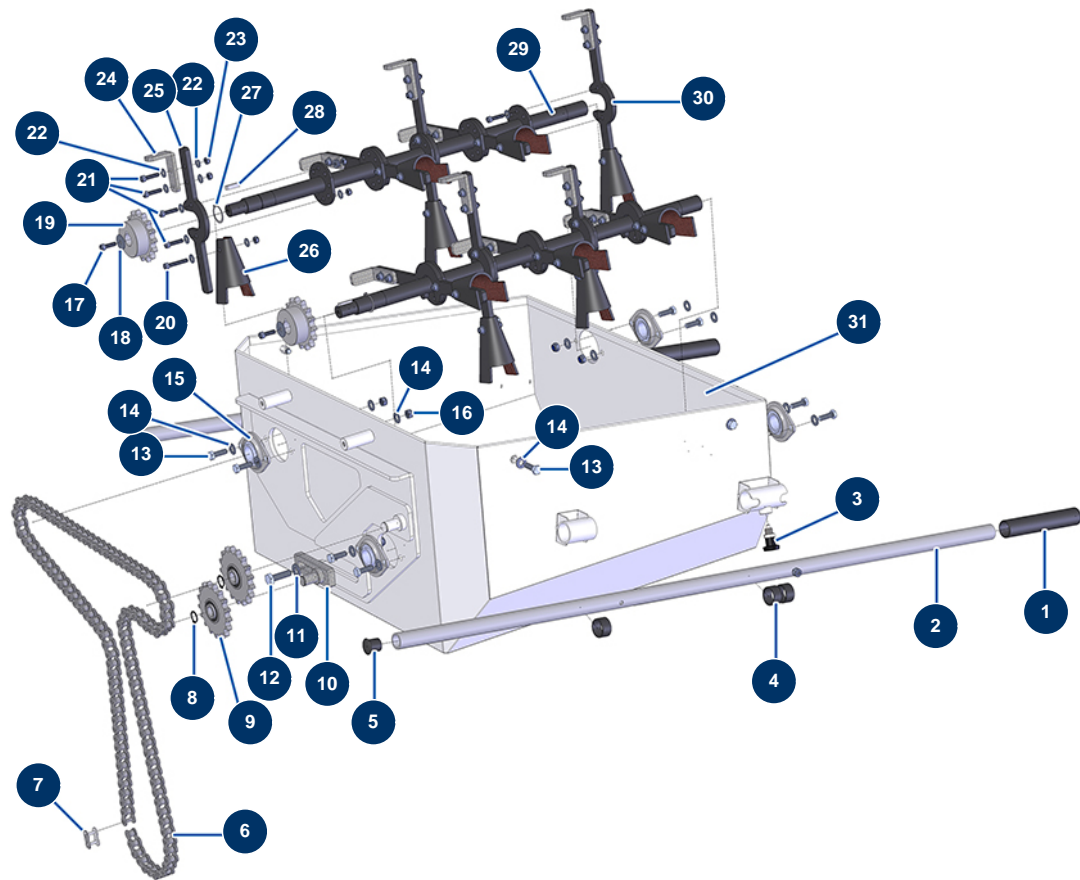


### Détails des pièces

Pos.	Référence	Désignation
1	14723	
2	14722	
3	11991	Ø 16 outer circlip
4	14727	17 teeth single sprocket pitch 15,875 for TURBISOL 200 blowing machine
5	12934	THEF 10 x 35 screw
6	80261	ø 10 inox medium washer
7	C22894	
8	90996	6 x 20 inox cylindrical head screw
9	80262	Very large inox washer Ø 6
10	14726	15 teeth single sprocket pitch 15,875 for TURBISOL 200 blowing machine
11	11544	THEF 8 x 25 screw
11	11544	THEF 8 x 25 screw
12	80260	ø 8 inox medium washer

Pos.	Référence	Désignation
12	80260	ø 8 inox medium washer
12	80260	ø 8 inox medium washer
13	14729	
14	13980	M 8 nylstop inox nut
15	90870	Black plastic end cap for ø 25 round tube
16	13453	Cylindrical bearing 26/30 x 16
17	90151	8 x 10 cylindrical head screw
18	C21326	JETMIX 80 / Blowing machine arm
19	90255	Arm handle for EUROPRO 24P, E50 and E100
20	13454	M12 X 1.5 indexage pin
21	C22893	
22	90157	M6 x 16 cylindrical head screw - CP 60
22	90157	M6 x 16 cylindrical head screw - CP 60
23	C23150	TURBISOL 200 4-blades lower mixing shaft
24	14217	M 6 nylstop inox nut
24	14217	M 6 nylstop inox nut
25	C23125	TURBISOL 200 star-shaped carding paddle ø250
26	C23124	TURBISOL 200 star-shaped carding paddle ø310
26	C23124	TURBISOL 200 star-shaped carding paddle ø310
27	C22952	TURBISOL 200 4-blades upper mixing shaft
28	13847	Ø 24 outer circlip
29	12000	6 x 6 x 29 parallel key with round end
30	90153	6 x 30 cylindrical head screw
31	80259	Ø 6 medium washer
31	80259	Ø 6 medium washer
32	11906	Blowing machine mixer foam-rubber square
33	10038	M 6 nut
34	90491	M 16 nylstop nut

## TURBISOL 200 blowing machine - Hopper (up to 09/2021)

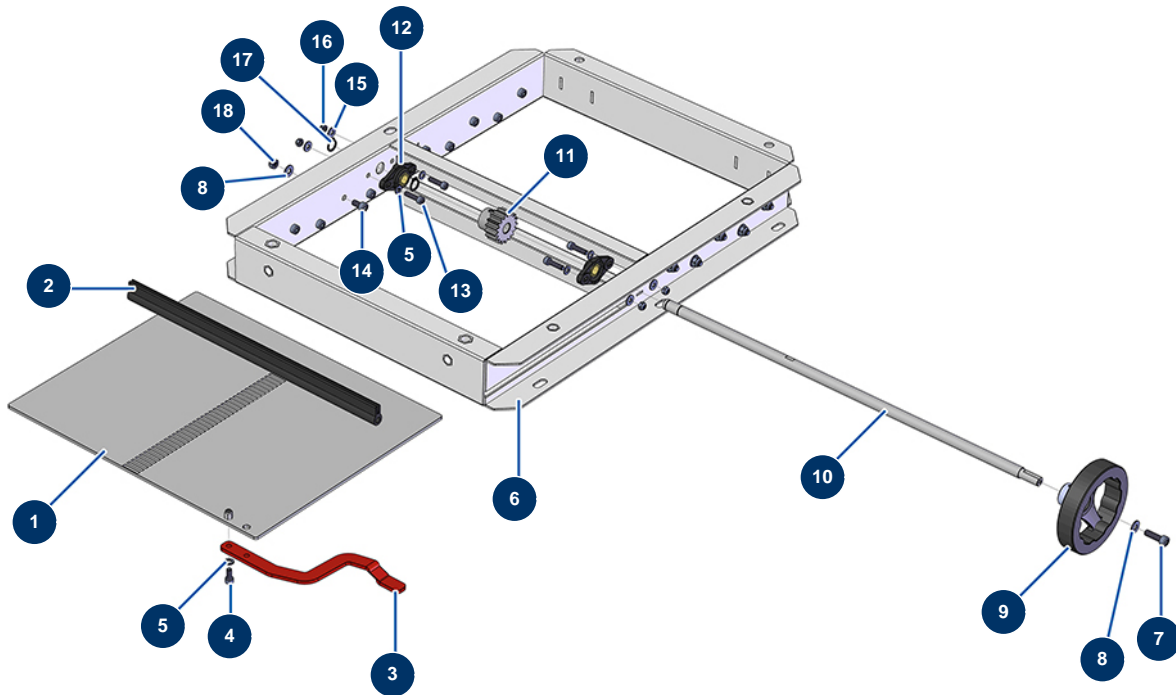


### Détails des pièces

Pos.	Référence	Désignation
1	90255	Arm handle for EUROPRO 24P, E50 and E100
2	C21326	JETMIX 80 / Blowing machine arm
3	13454	M12 X 1.5 indexage pin
4	13453	Cylindrical bearing 26/30 x 16
5	90870	Black plastic end cap for ø 25 round tube
6	14722	
7	14723	
8	11991	Ø 16 outer circlip
9	14727	17 teeth single sprocket pitch 15,875 for TURBISOL 200 blowing machine
10	C22894	
11	80261	ø 10 inox medium washer
12	12934	THEF 10 x 35 screw
13	11544	THEF 8 x 25 screw

Pos.	Référence	Désignation
13	11544	THEF 8 x 25 screw
14	80260	ø 8 inox medium washer
14	80260	ø 8 inox medium washer
14	80260	ø 8 inox medium washer
15	14729	
16	13980	M 8 nylstop inox nut
17	90996	6 x 20 inox cylindrical head screw
18	80262	Very large inox washer Ø 6
19	14726	15 teeth single sprocket pitch 15,875 for TURBISOL 200 blowing machine
20	12567	6 x 35 cylindrical head screw
21	80614	6 x 25 inox cylindrical head screw
22	80259	Ø 6 medium washer
22	80259	Ø 6 medium washer
23	14217	M 6 nylstop inox nut
24	C20692	TURBISOL mixing claw, 45 mm
25	C22966	25
26	11906	Blowing machine mixer foam-rubber square
27	13847	Ø 24 outer circlip
28	12000	6 x 6 x 29 parallel key with round end
29	C22952	TURBISOL 200 4-blades upper mixing shaft
30	C22965	30
31	C22893	

## TURBISOL 200 blowing machine - Flap

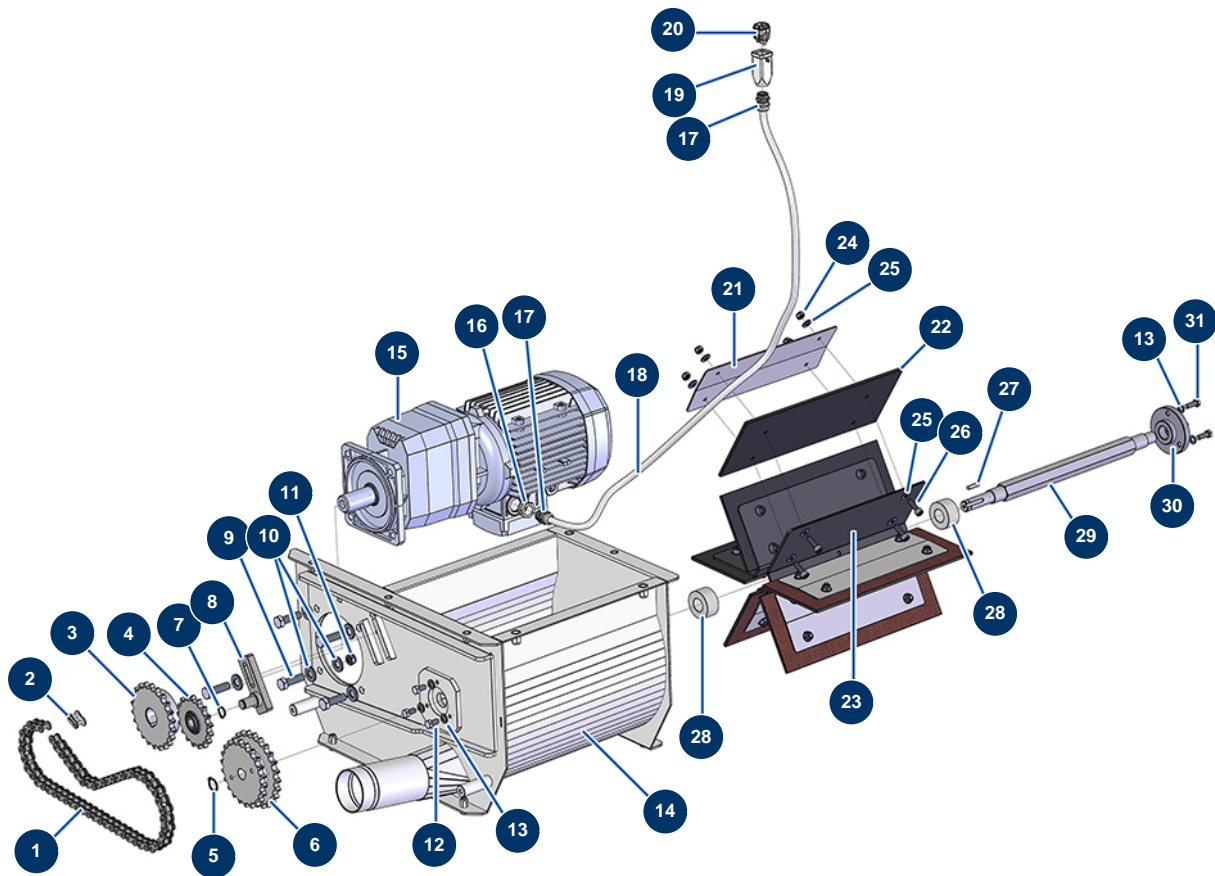


### Détails des pièces

Pos.	Référence	Désignation
1	C22903	
2	12301	Profile gasket for sealing by the metre
3	C22967	
4	90161	5 x 12 inox cylindrical head screw
5	70085	∅ 5 narrow washer
5	70085	∅ 5 narrow washer
6	C22901	
7	90996	6 x 20 inox cylindrical head screw
8	80259	∅ 6 medium washer
8	80259	∅ 6 medium washer
9	14709	TURBISOL 200 blowing machine 3-spoke thumb wheel
10	M10704	TURBISOL 200 blowing machine flap axle
11	14731	17 teeth trapdoor sprocket for TURBISOL 200 blowing machine

Pos.	Référence	Désignation
12	14712	2-hole flange bearing ø 12 mm
13	12863	5 x 20 inox cylindrical head screw
14	12112	6 x 12 cylindrical head screw
15	11737	ø 5 inox medium washer
16	11880	M 5 nylstop nut
17	BE15854	MAXPRO 800, 1100 mixer S-12 circlips
18	14217	M 6 nylstop inox nut

## TURBISOL 200 blowing machine - Transmission (from 10/2021)

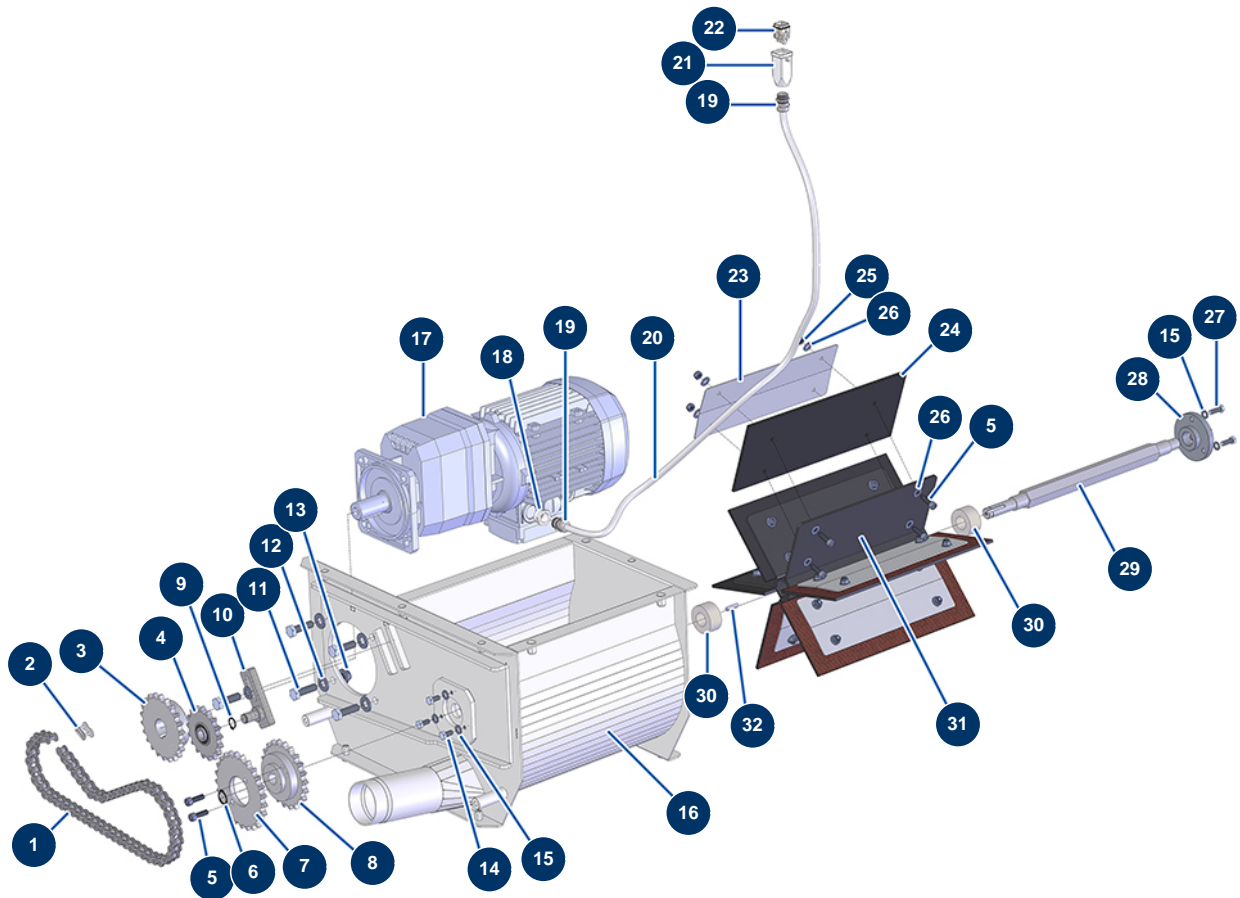


### Détails des pièces

Pos.	Référence	Désignation
1	14722	
2	14723	
3	14724	22 teeth single sprocket pitch 15,875 for TURBISOL 200 blowing machine
4	14727	17 teeth single sprocket pitch 15,875 for TURBISOL 200 blowing machine
5	12318	Ø 20 outer circlip
6	C23247	
7	11991	Ø 16 outer circlip
8	C22894	
9	12928	THEF 12 x 40 screw
10	14102	ø 12 inox medium washer
11	13981	M 10 nylstop inox nut
12	30295	THEF 8 x 16 screw
13	30256	ø 8 inox narrow washer

Pos.	Référence	Désignation
13	30256	∅ 8 inox narrow washer
14	C22922	14
15	12059	Geared motor 1,5 kW - TC322 - R18,1 - 1400 rpm - 400V
16	80446	Cable gland reduction M 25-11
17	30082	Nickel plated watertight cable gland of 11
17	30082	Nickel plated watertight cable gland of 11
18	11964	H05VVF 4G1 grey electrical cable by the metre
19	11916	Blowing machine insulating cover 3 p + T
20	11913	Blowing machine male insert 4 p + T
21	C22957	
22	14732	TURBISOL 200 distributor rubber paddle
23	C22956	TURBISOL 200 hexagonal rotating distributor
24	13980	M 8 nylstop inox nut
25	80260	∅ 8 inox medium washer
25	80260	∅ 8 inox medium washer
26	12783	8 x 25 cylindrical head screw
27	12000	6 x 6 x 29 parallel key with round end
28	14760	Felt gasket Ø 20 x 40 for TURBISOL 200 blowing machine
28	14760	Felt gasket Ø 20 x 40 for TURBISOL 200 blowing machine
29	M10728	TURBISOL 200 distributor shaft
30	M10709	
31	11544	THEF 8 x 25 screw

## TURBISOL 200 blowing machine - Transmission (up to 09/2021)

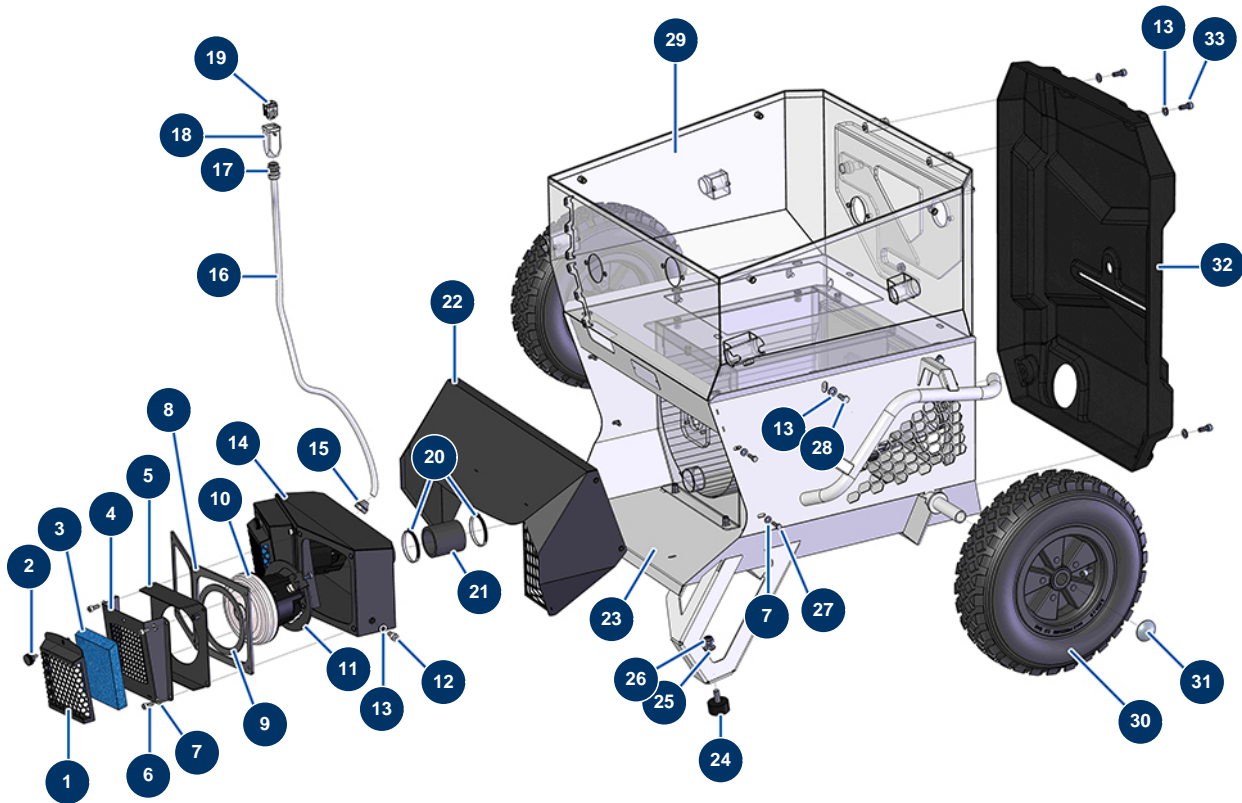


### Détails des pièces

Pos.	Référence	Désignation
1	14722	
2	14723	
3	14724	22 teeth single sprocket pitch 15,875 for TURBISOL 200 blowing machine
4	14727	17 teeth single sprocket pitch 15,875 for TURBISOL 200 blowing machine
5	12783	8 x 25 cylindrical head screw
5	12783	8 x 25 cylindrical head screw
6	12318	Ø 20 outer circlip
7	14728	
8	14725	21 teeth single sprocket pitch 15,875 for TURBISOL 200 blowing machine
9	11991	Ø 16 outer circlip
10	C22894	
11	12928	THEF 12 x 40 screw
12	14102	ø 12 inox medium washer

Pos.	Référence	Désignation
13	13981	M 10 nylstop inox nut
14	30295	THEF 8 x 16 screw
15	30256	∅ 8 inox narrow washer
15	30256	∅ 8 inox narrow washer
16	C22922	16
17	12059	Geared motor 1,5 kW - TC322 - R18,1 - 1400 rpm - 400V
18	80446	Cable gland reduction M 25-11
19	30082	Nickel plated watertight cable gland of 11
19	30082	Nickel plated watertight cable gland of 11
20	11964	H05VVF 4G1 grey electrical cable by the metre
21	11916	Blowing machine insulating cover 3 p + T
22	11913	Blowing machine male insert 4 p + T
23	C22957	
24	14732	TURBISOL 200 distributor rubber paddle
25	13980	M 8 nylstop inox nut
26	80260	∅ 8 inox medium washer
26	80260	∅ 8 inox medium washer
27	11544	THEF 8 x 25 screw
28	M10709	
29	M10728	TURBISOL 200 distributor shaft
30	14760	Felt gasket Ø 20 x 40 for TURBISOL 200 blowing machine
30	14760	Felt gasket Ø 20 x 40 for TURBISOL 200 blowing machine
31	C22956	TURBISOL 200 hexagonal rotating distributor
32	12000	6 x 6 x 29 parallel key with round end

## TURBISOL 200 blowing machine - Chassis



### Détails des pièces

Pos.	Référence	Désignation
1	C21971	TURBISOL 164 foam filter holder
2	12261	Ø22 M5 x 10 outer threaded plastic thumb wheel
3	13989	TURBISOL 164 turbine foam filter
4	C21498	Turbine door for TURBISOL 164/2 blowing machine
5	C21495	5
6	90157	M6 x 16 cylindrical head screw - CP 60
7	80259	Ø 6 medium washer
7	80259	Ø 6 medium washer
8	13536	Double turbine box gasket for TURBISOL 164/2
9	13537	TURBISOL 164/2 turbine gasket
10	13556	1-stage turbine - 230V
11	C21500	Turbine flange for TURBISOL 164/2
12	90151	8 x 10 cylindrical head screw

Pos.	Référence	Désignation
13	80260	ø 8 inox medium washer
13	80260	ø 8 inox medium washer
13	80260	ø 8 inox medium washer
14	C21494	Air box for TURBISOL 164/2 blowing machine
15	13632	M 20 grey rubber cable gland
16	11964	H05VVF 4G1 grey electrical cable by the metre
17	30040	Nickel plated watertight cable gland of 11 CEM
18	11916	Blowing machine insulating cover 3 p + T
19	11911	Blowing machine male insert 3 p + T
20	11752	Worm gear clamp 50 x 70 x 9
21	12216	Blowing machine hose Ø 48 x Length 75 mm
22	C22960	22
23	C22912	23
24	30145	Ø 40 x 20 M10 stop
25	80261	ø 10 inox medium washer
26	13981	M 10 nylstop inox nut
27	14539	THEF 6 x 20 screw
28	30273	THEF 8 x 20 screw
29	C22893	
30	80003	Ø400 complete wheel with shaft of 25 for 100TH, MPE 300
31	90282	Ø25 chromed clip
32	14721	Transmission protection crankcase for blowing machine TURBISOL 200
33	80470	8 x 20 cylindrical head screw